

Device Settings Features

Use the bookmarks in the left-hand column to jump to the QuickHelp answers to these questions:

How do I set the theme for my videophone's user interface?

How do I set up the LightRing pattern, brightness and color?

How do I set up the screensavers on my nVP2?

How do I turn Video Center notifications on and off?

How do I send SignMail alerts to one or two email addresses?

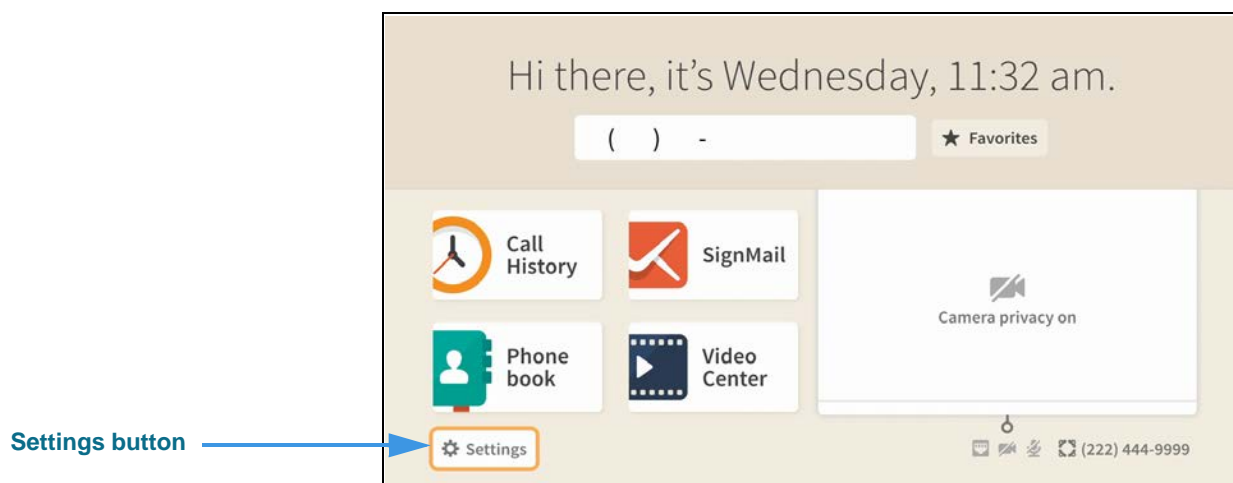
How do I set up the Saved Text feature?

How do I turn the Camera Notifications feature on and off?

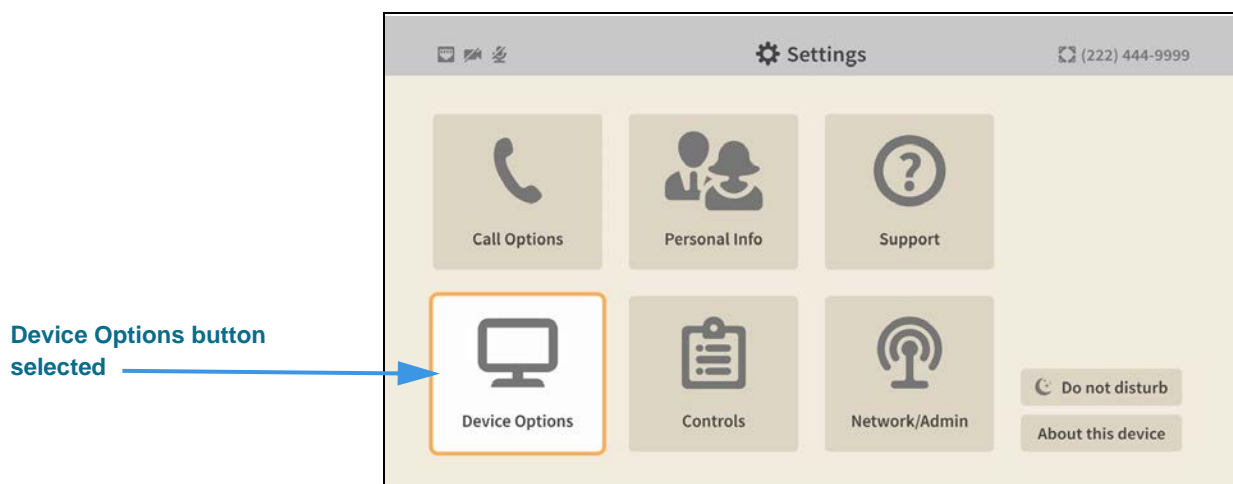
How do I set the theme for my videophone's user interface?

ntouch VP2's Theme feature that lets you choose from four different color settings for the videophone's user interface. The themes are named "Sand Dune" (the default), "Ocean Tide," "Contrast," and "Thunderstorm."

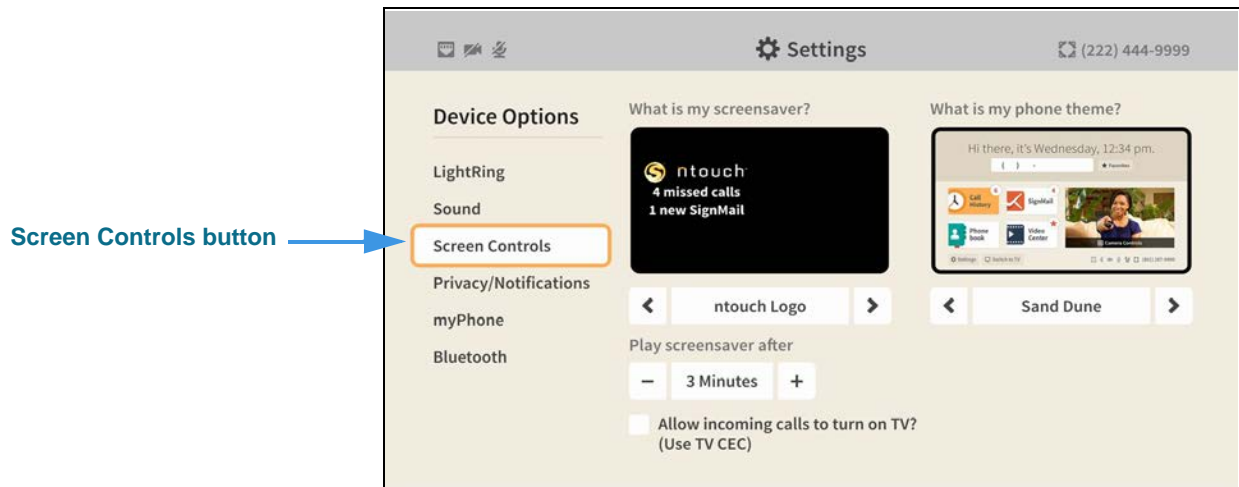
Step 1. Start at the Home screen. Move to the **Settings** button as shown below.



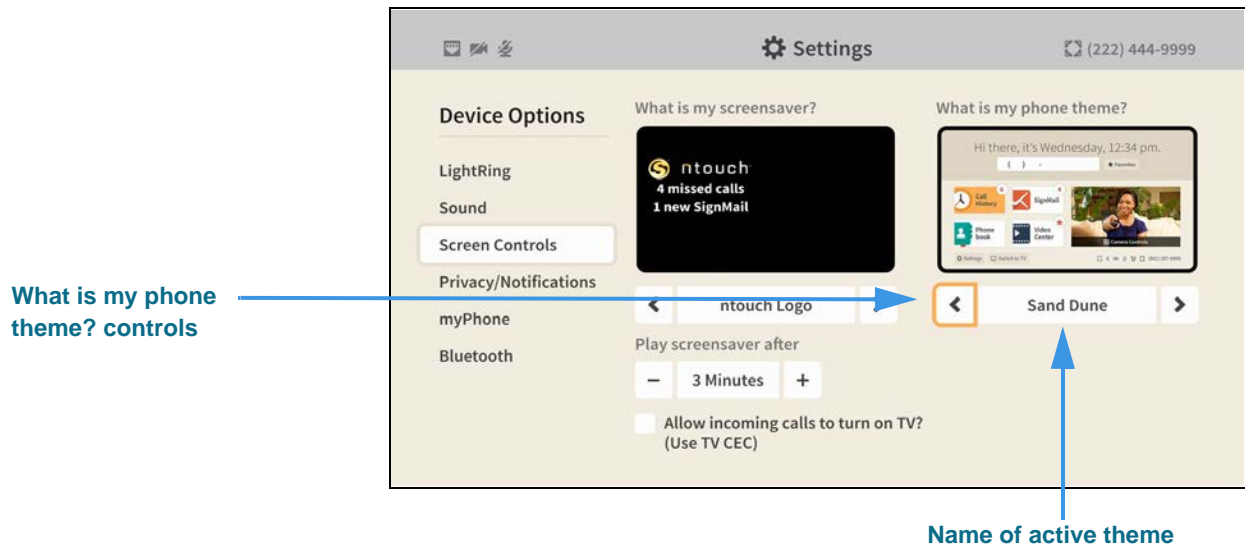
Step 2. Move to the **Device Options** button as shown below.



Step 3. Select the **Screen Controls** button to open the screen shown below.

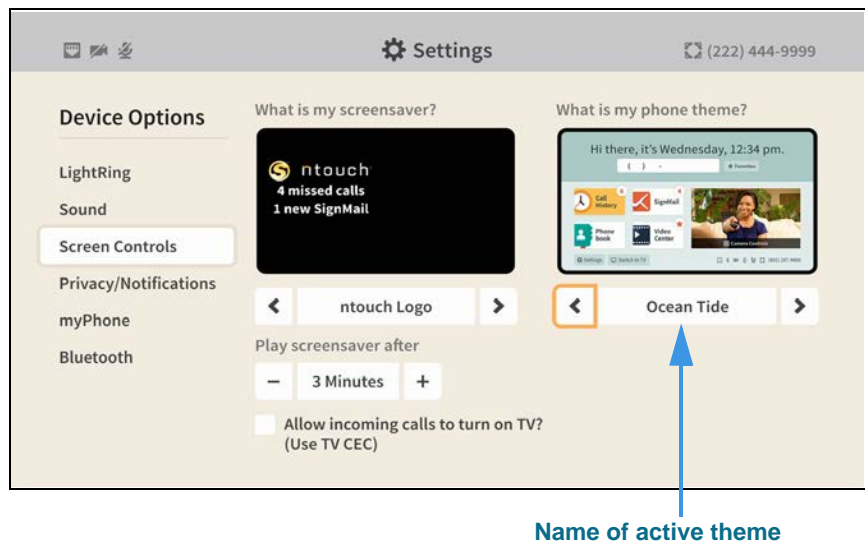


Step 4. Move to the **What is my phone theme?** control buttons as shown below.



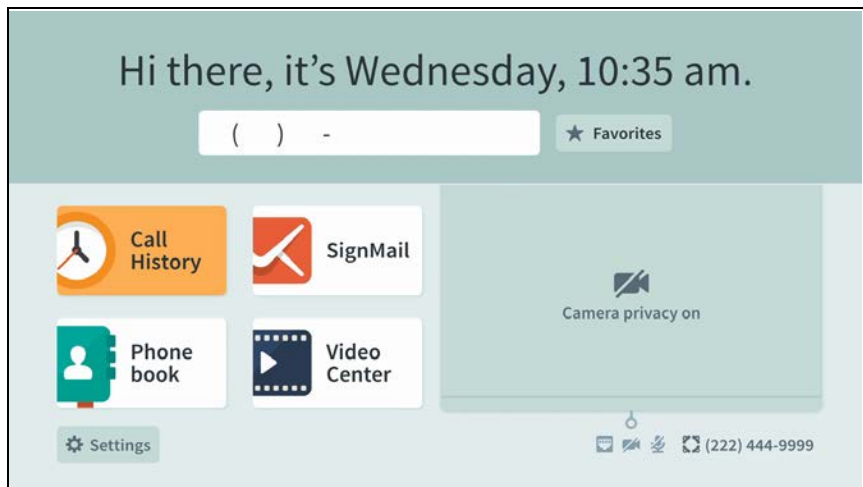
You can use the right and left arrow controls in the *What is my phone theme?* area to select a theme. In this example, the default “Sand Dune” theme is selected. All of the sample screens shown above show the Sand Dune theme’s “light-tan and white” color palette.

Step 5. Select the **left or right arrow** button to choose another theme as shown below.



To make the selected theme active, just return to the *Home* screen to apply the theme.

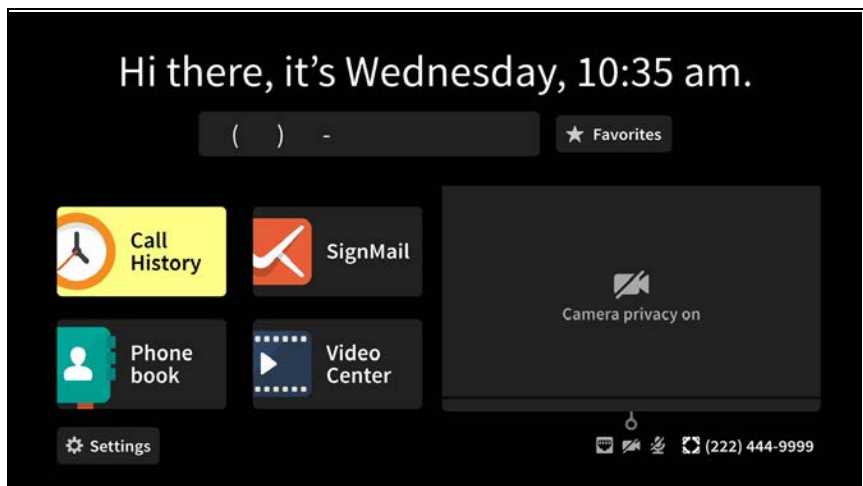
Step 6. Press the remote control's **Home** key to return to the Home screen as shown below.



The above image shows the “blueish-teal and white” color palette of the “Ocean Tide” theme. The yellow color that is used in the “Sand Dune” theme to show the highlighted selection is also used in this theme.

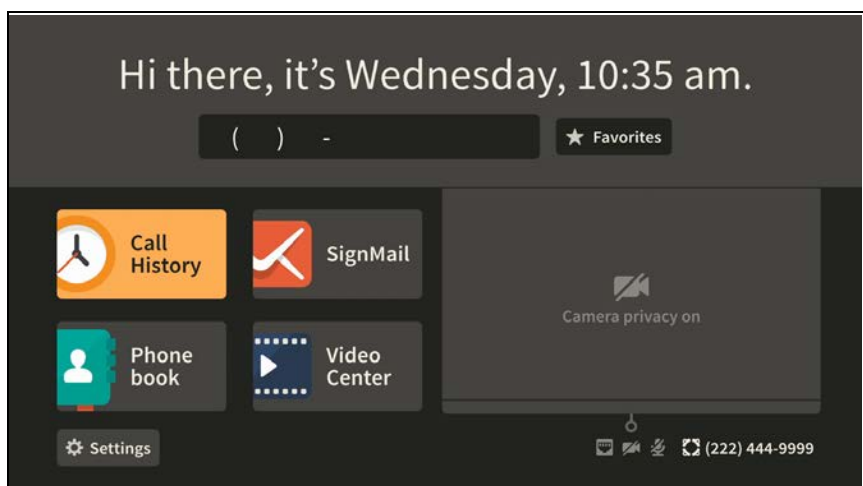
Step 7. To try out the other available themes, just return to the “**What is my phone theme?**” area of the Screen Controls setting screen to make another theme selection.

Step 8. Select the **Contrast** theme to make the Home screen appear as shown below.



The above image shows the “black and white” color palette of the “Contrast” theme. The buttons, fields, and active areas of the screen are shown as dark gray areas against a black background, while active buttons are shown in a brighter yellow with black text. The text is either white or black to provide maximum visual contrast.

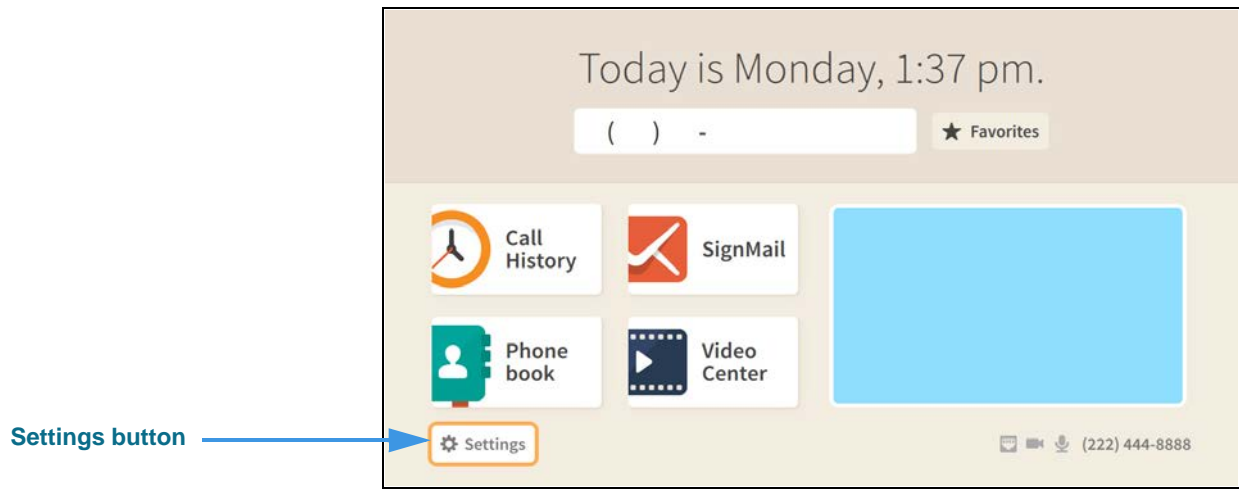
Step 9. Select the **Thunderstorm** theme to make the Home screen appear as shown below.



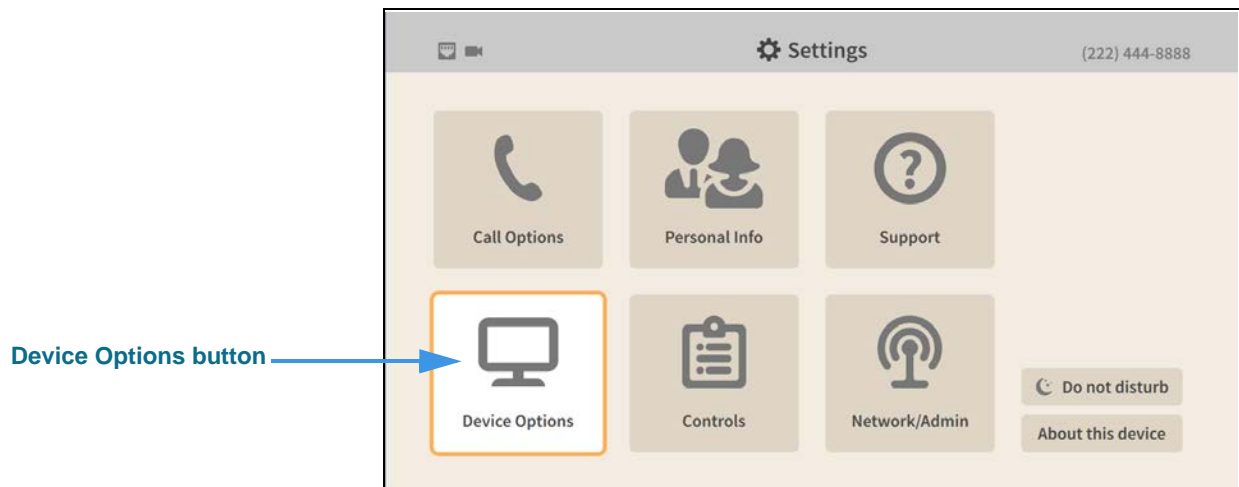
The above image shows the “black, gray and white” color palette of the “Thunderstorm” user interface theme. The overall look is similar to the “Contrast” theme, except a lighter gray is used in many areas, giving the UI an overall gray-themed look. The default yellow (used for highlighted selections in the “Sand Dune” theme) is also used in this theme.

How do I set up the LightRing pattern, brightness and color?

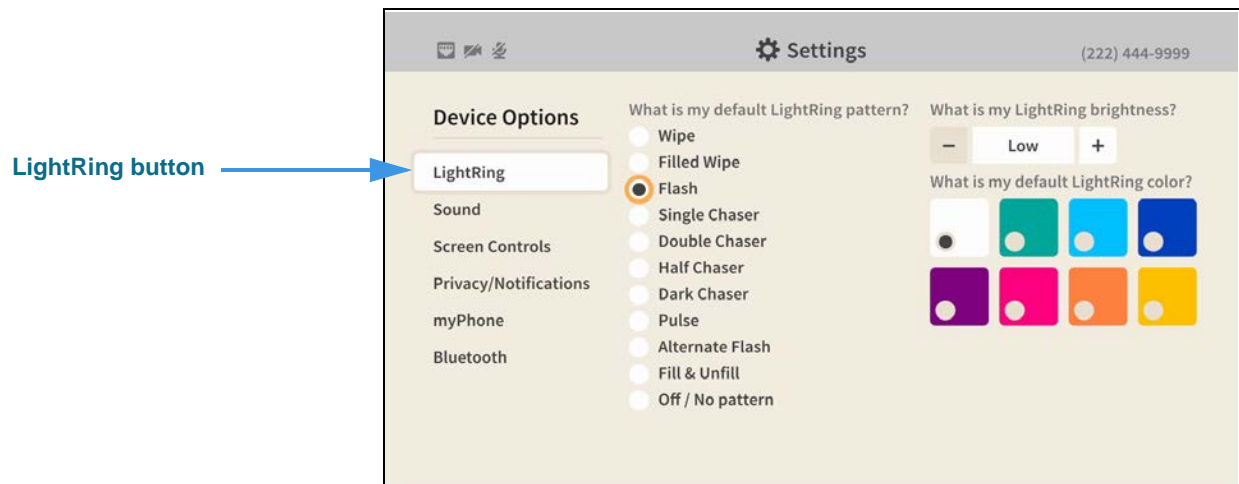
Step 1. Start at the Home screen as shown below.



Step 2. Select the Settings button to open the screen shown below.

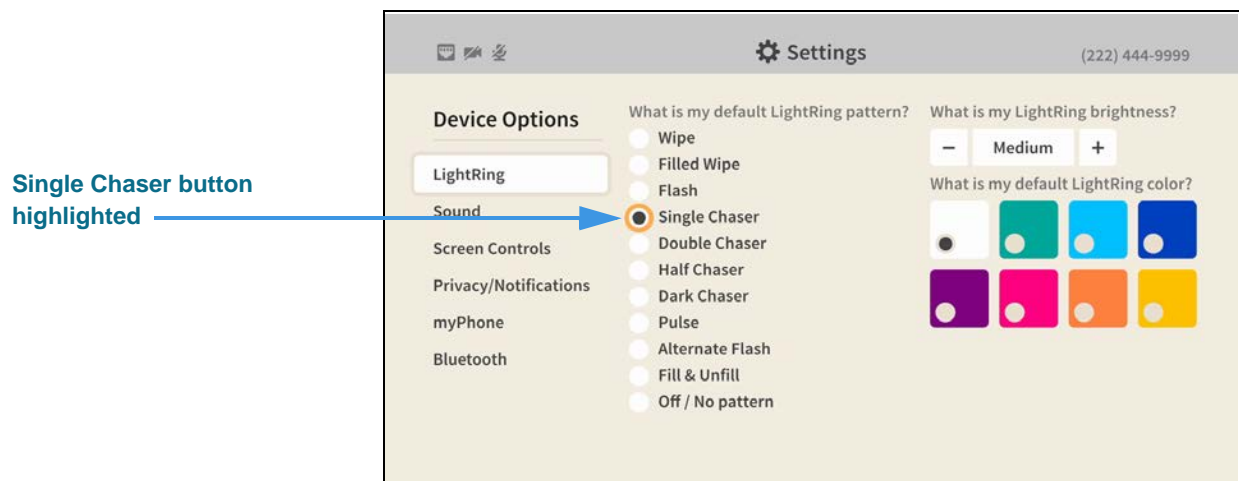


Step 3. Select the Device Options button to open the screen shown below.

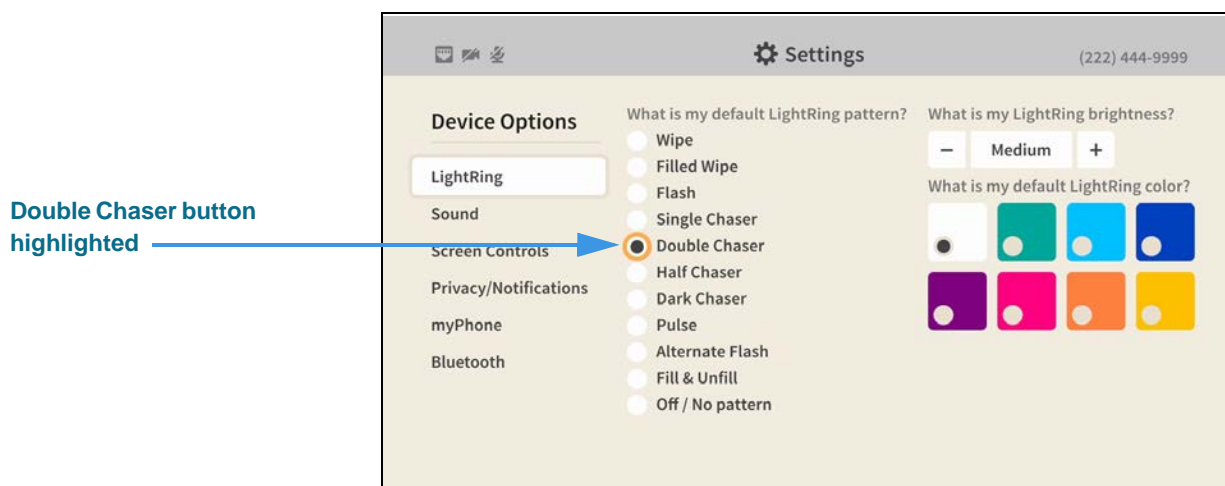


The **LightRing** button will be selected when you first open the Device Options settings.

Step 4. To select a new default LightRing pattern, move to the list in the center of the screen as shown below.

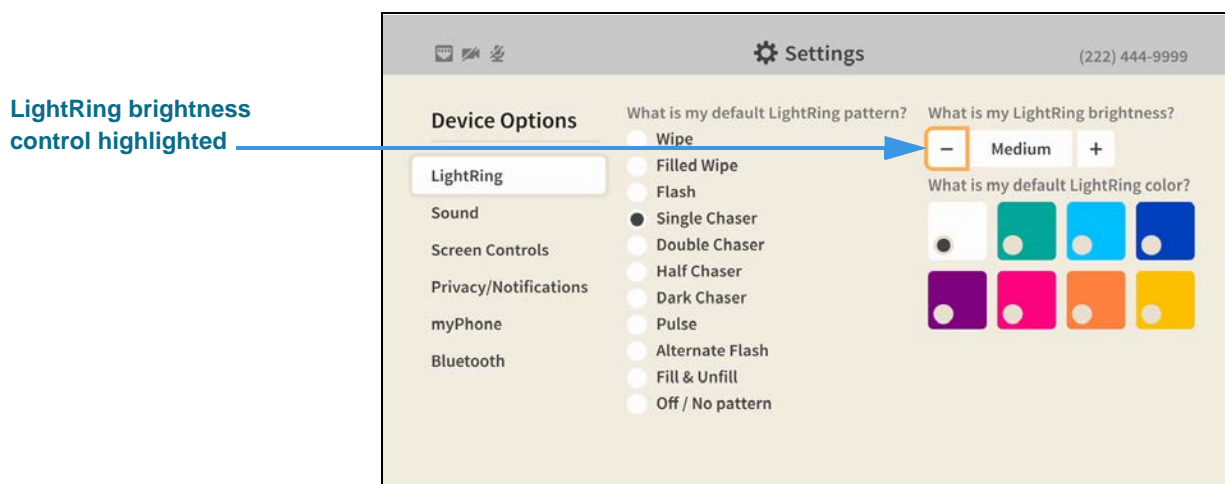


Step 5. For example, you could select the **Double Chaser** pattern as shown below.



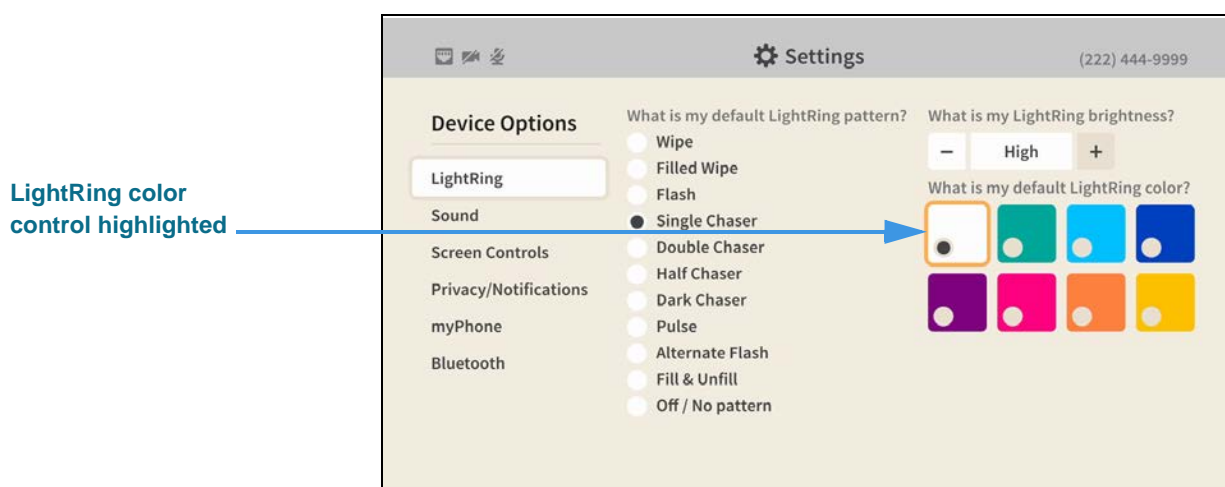
When you select a new pattern, the LightRing will flash with the new pattern. You can set the pattern and color for your individual contacts by editing the contact record.

Step 6. To select a new **LightRing brightness**, move to the control at the top-right corner of the screen as shown below.



You can choose from three levels of brightness: **Low**, **Medium** and **High**. The setting you choose will apply to all your incoming calls.

Step 7. To select a new **default LightRing color**, move to the control at the middle-right side of the screen as shown below.

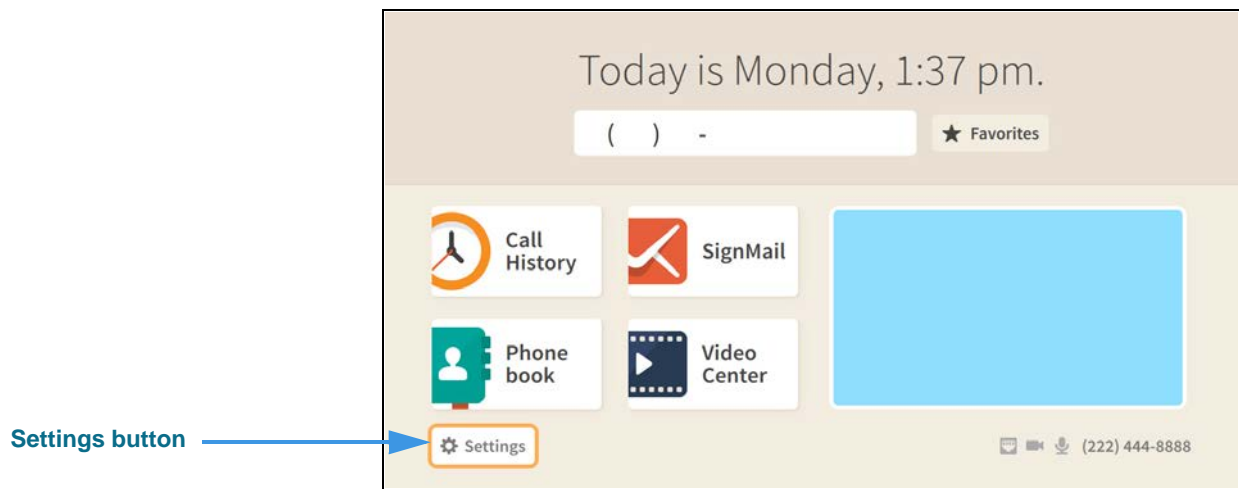


When you select a new color, the LightRing will flash with the new color using the selected default pattern.

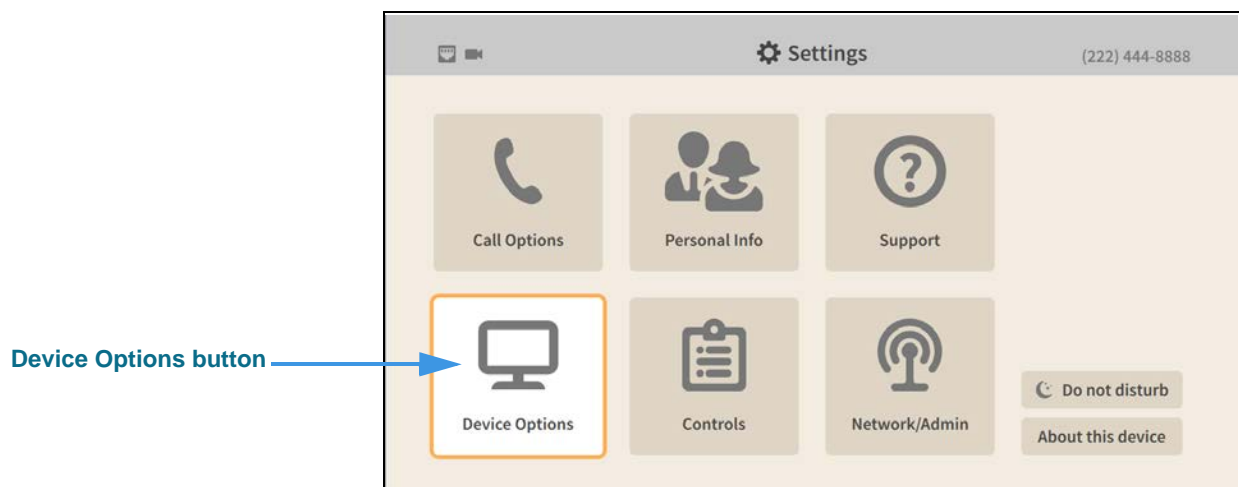
Return to the *Home* screen by pressing the **Home** key on the remote control. Your selections will be saved.

How do I set up the screensavers on my nVP2?

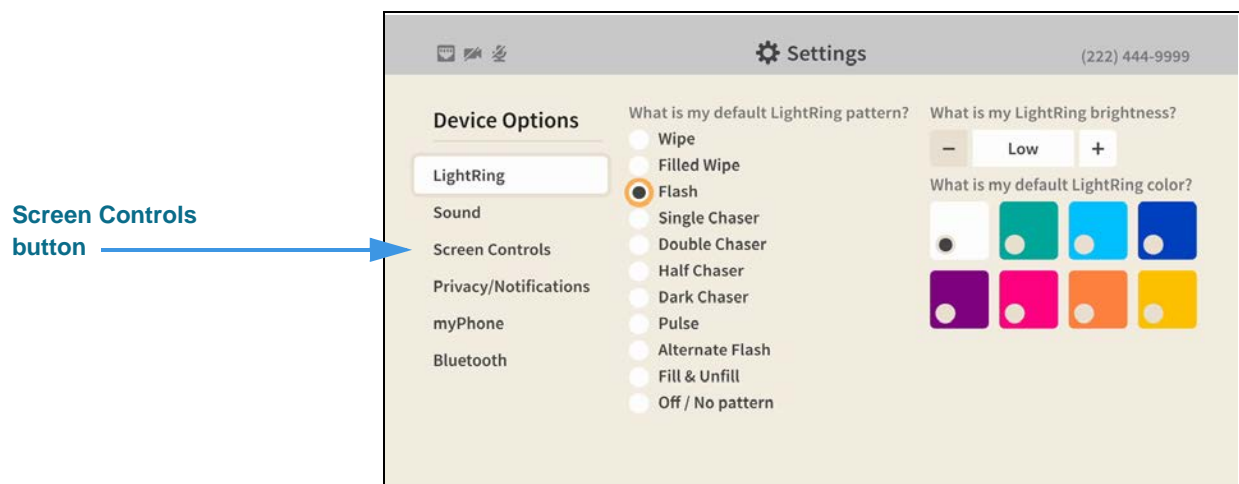
Step 1. Start at the Home screen as shown below.



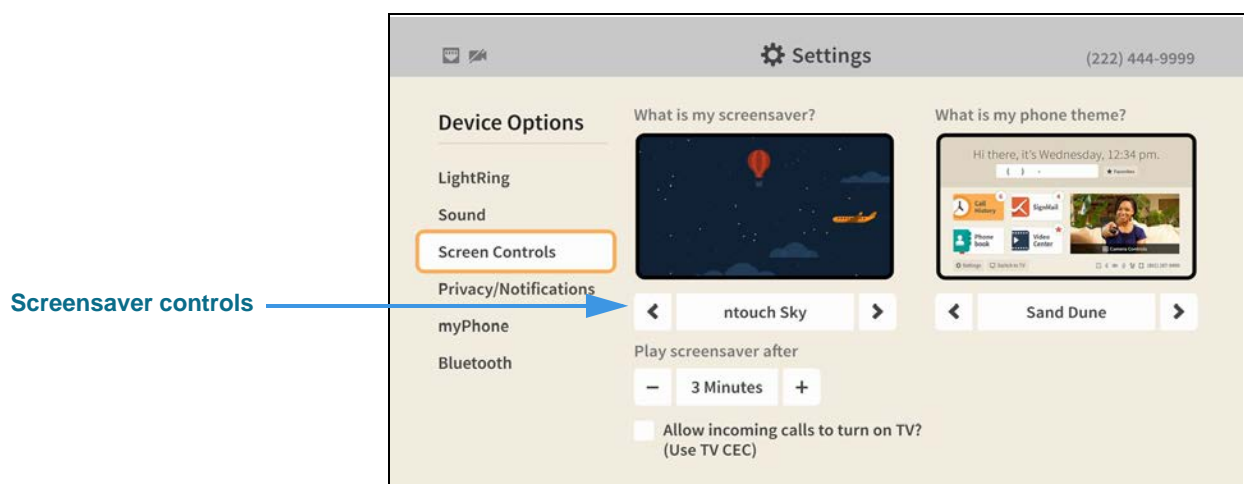
Step 2. Select the Settings button to open the screen shown below.



Step 3. Select the Device Options button to open the screen shown below.



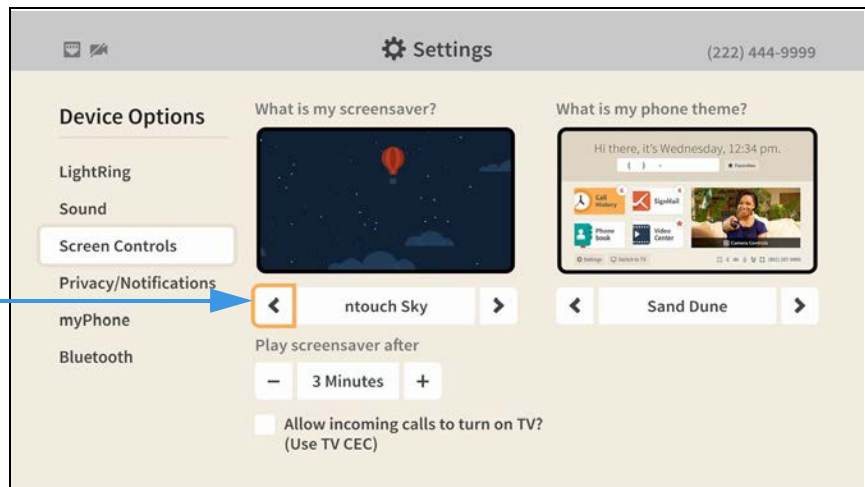
Step 4. Move to the Screen Controls button to open the screen shown below.



Step 5. To select a different screensaver, move to the **screensaver control** as shown below.

Screensaver control highlighted

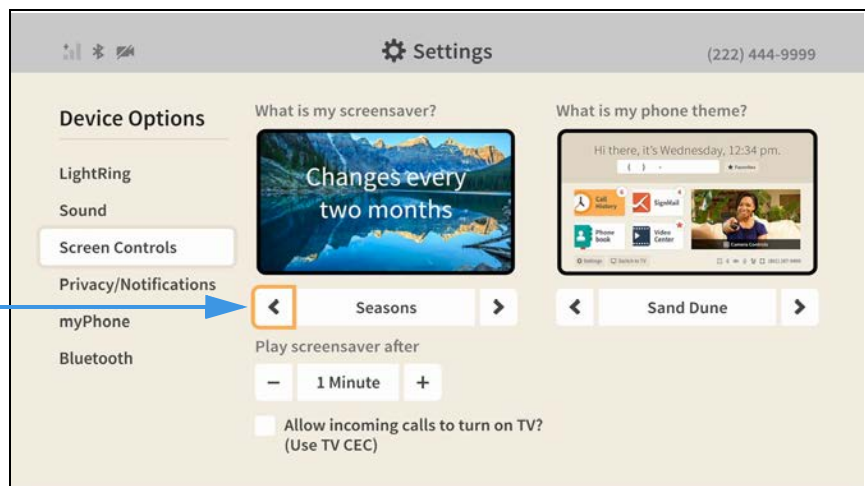
Screensaver controls highlighted



You can use the Screensaver controls to select a different screensaver. To see the available screensavers, use the controls to move up or down through the list.

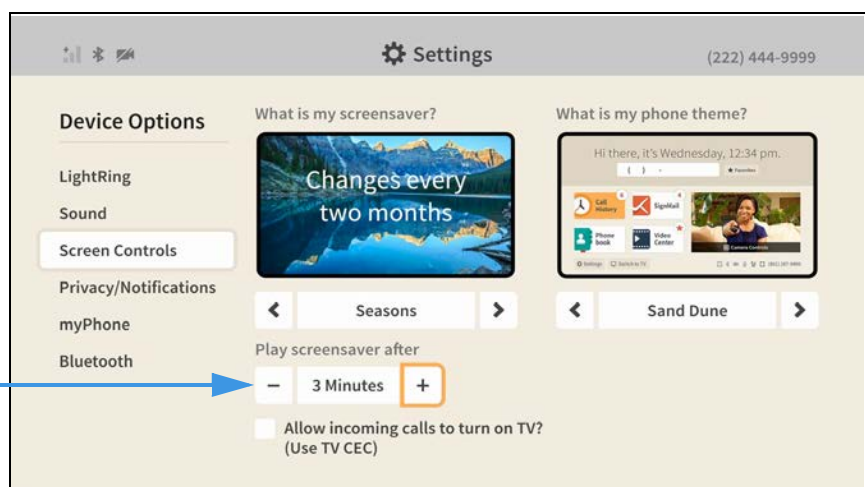
Step 6. For example, you could select the **Seasons** screensaver as shown below.

Seasons screensaver selected



Step 7. To change the time delay before the screensaver begins playing, move to the **Play screensaver after** control as shown below.

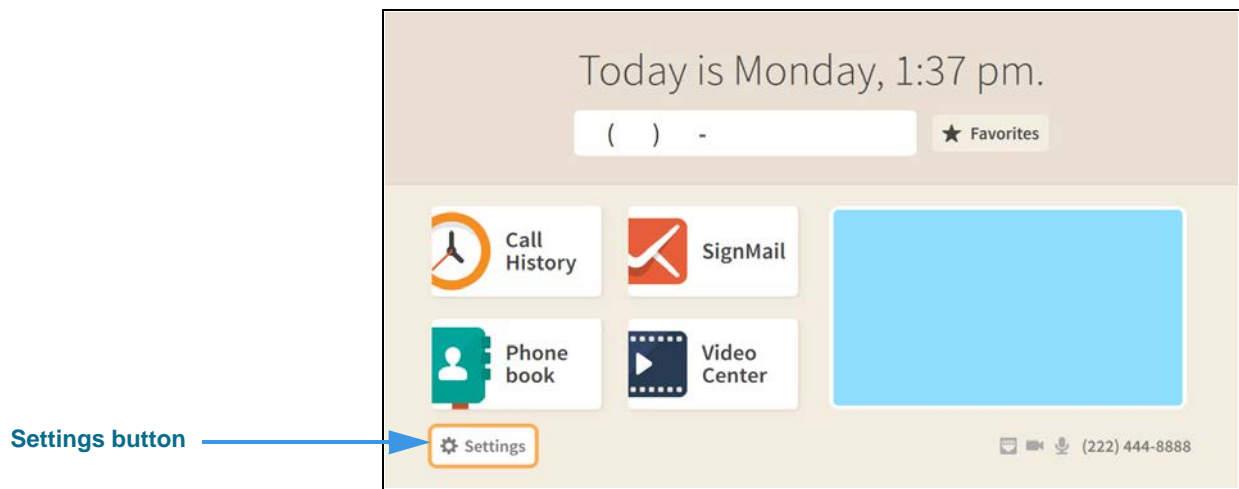
3 minutes delay selected



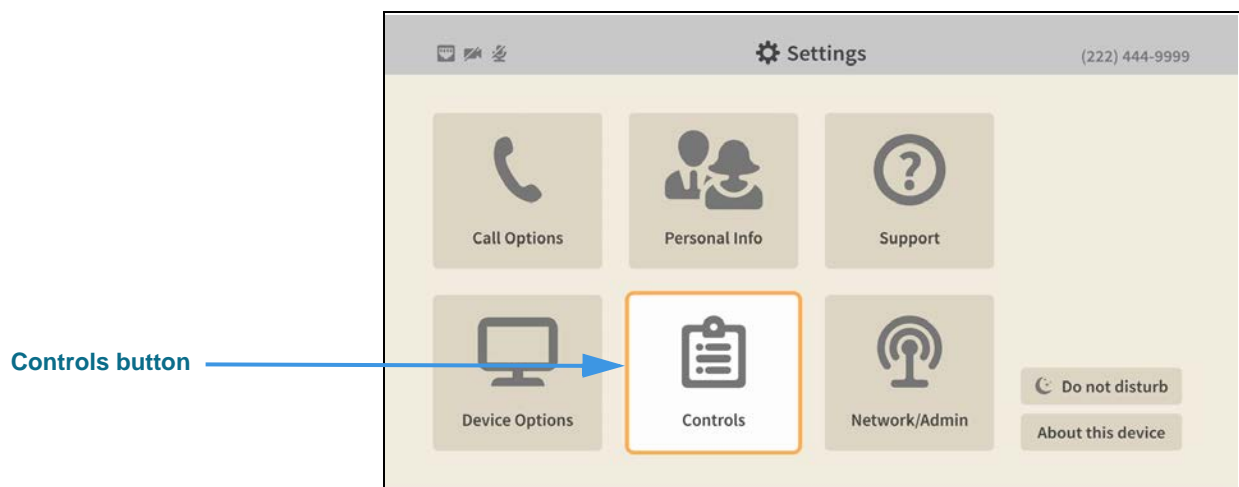
Return to the *Home* screen by pressing the **Home** key on the remote control. Your selections will be saved.

How do I turn Video Center notifications on and off?

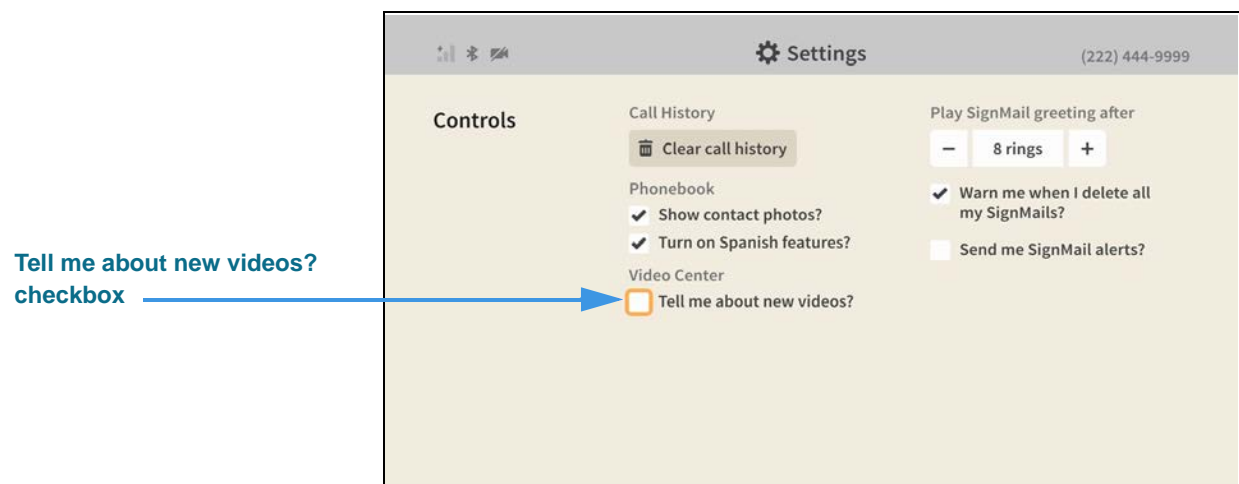
Step 1. Start at the Home screen as shown below.



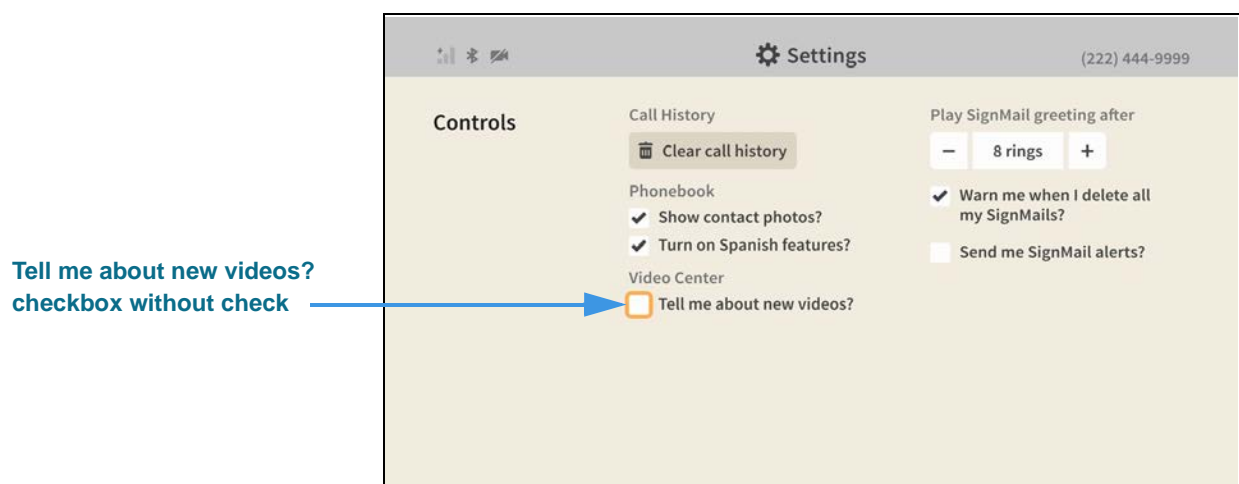
Step 2. Select the **Settings** button to open the screen shown below.



Step 3. Select the **Controls** button to open the screen shown below.



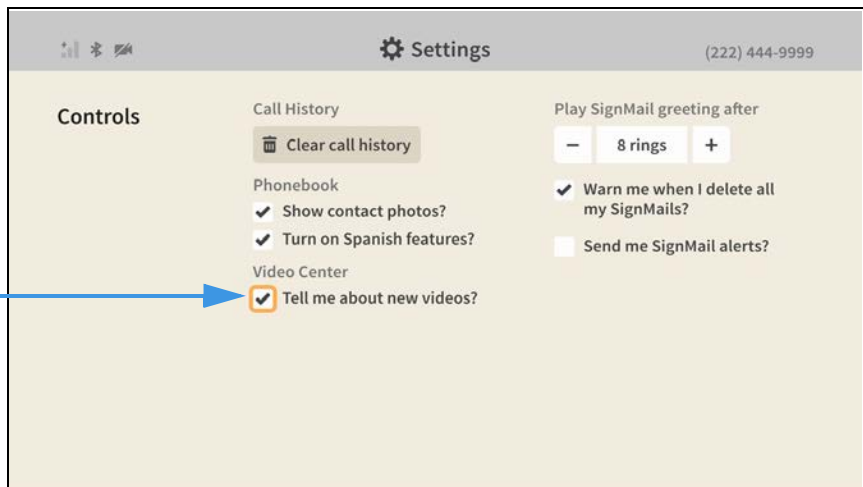
Step 4. Move to the **Tell me about new videos?** checkbox as shown below.



When the **Tell me about new videos?** checkbox does *not* contain a check, you will not receive notifications that new videos are available for viewing in the Video Center.

Step 5. Select the **Tell me about new videos?** checkbox to add a check as shown below.

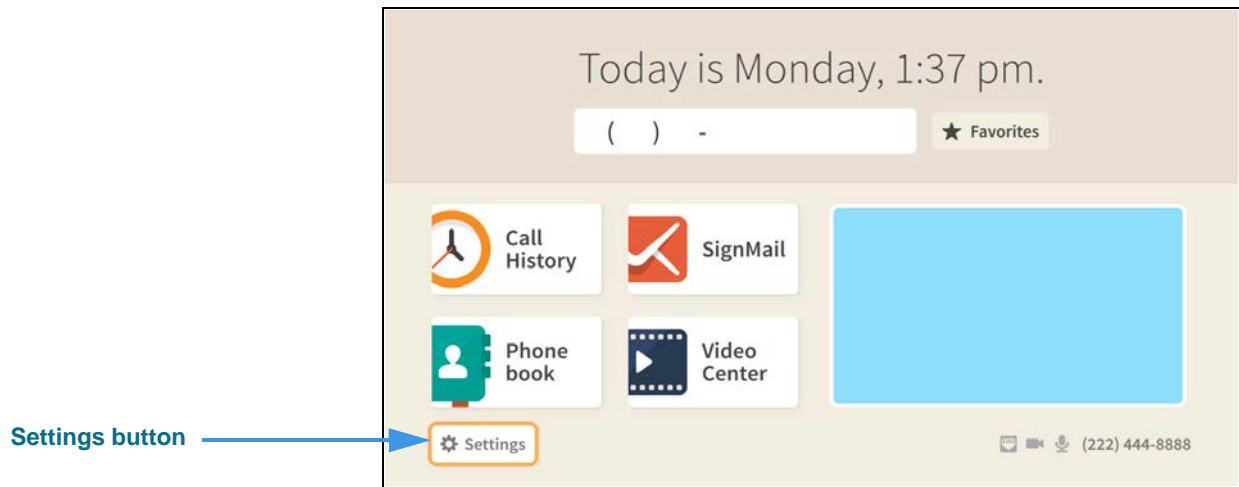
**Tell me about new videos?
checkbox with check** →



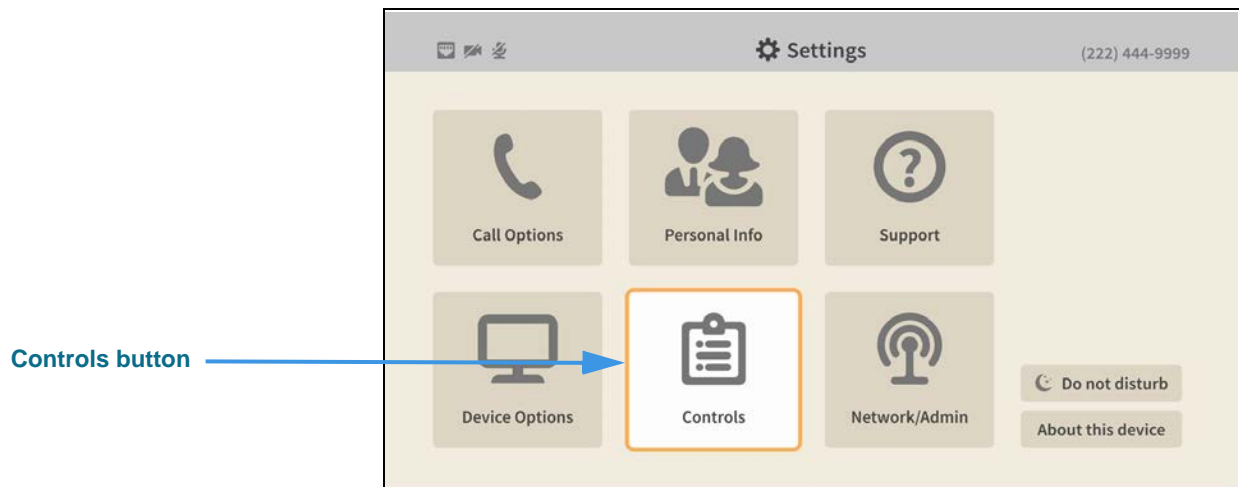
When the **Tell me about new videos?** checkbox contains a check, you will receive notifications whenever new videos are available for viewing in the Video Center.

How do I send SignMail alerts to one or two email addresses?

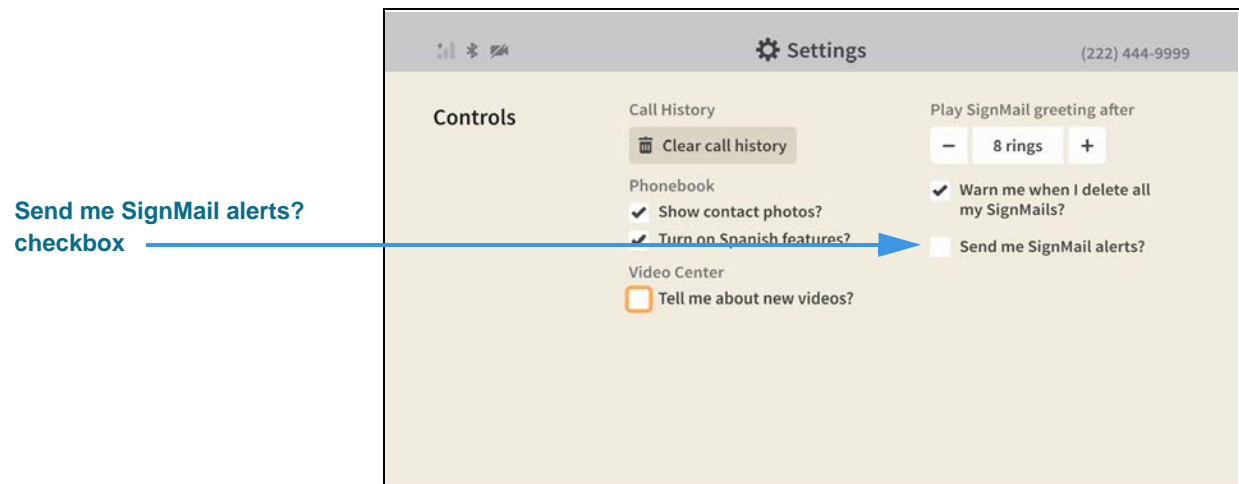
Step 1. Start at the Home screen as shown below.



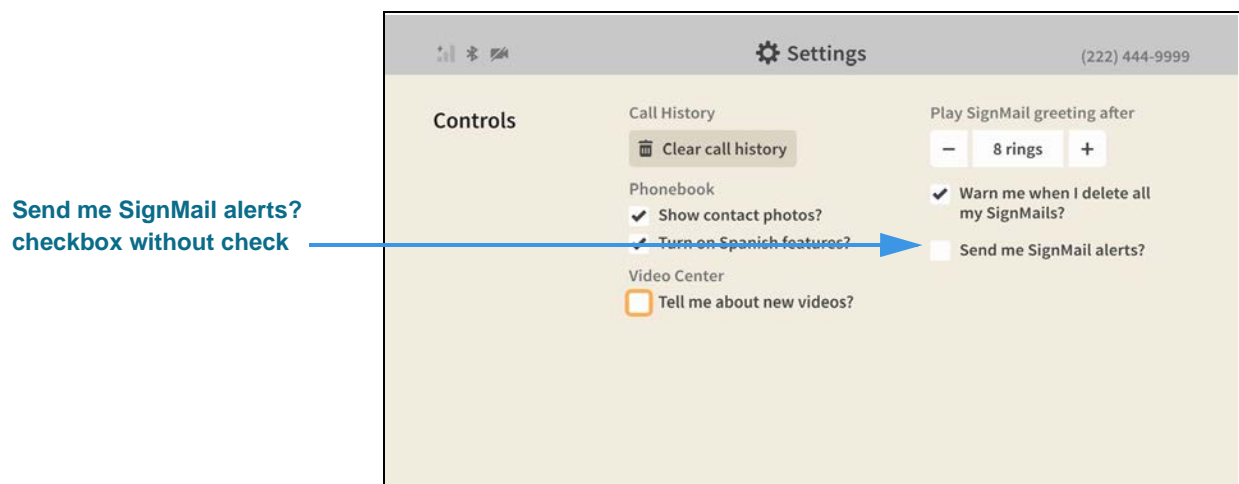
Step 2. Select the **Settings** button to open the screen shown below.



Step 3. Select the **Controls** button to open the screen shown below.

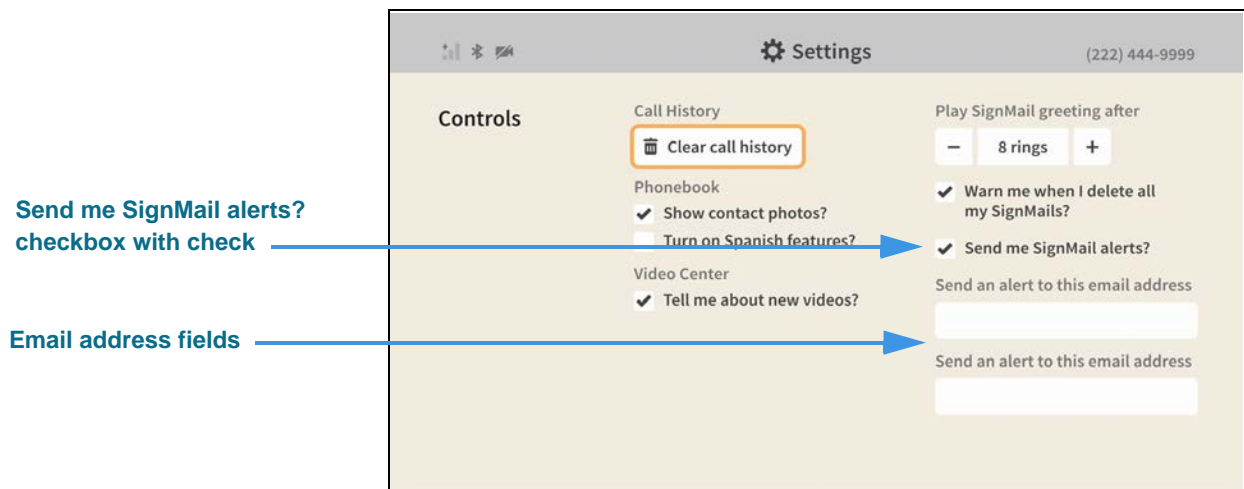


Step 4. Move to the **Send me SignMail alerts?** checkbox as shown below.



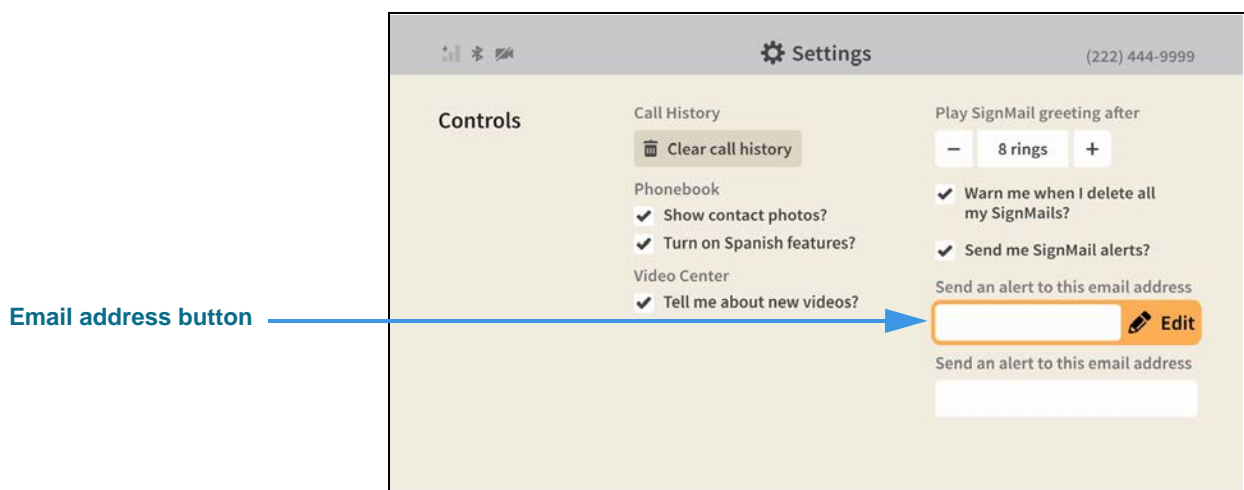
When the **Send me SignMail alerts?** checkbox does *not* contain a check, you will not receive emails that tell you when you have received new SignMail messages.

Step 5. Select the **Send me SignMail alerts?** checkbox to add a check as shown below.

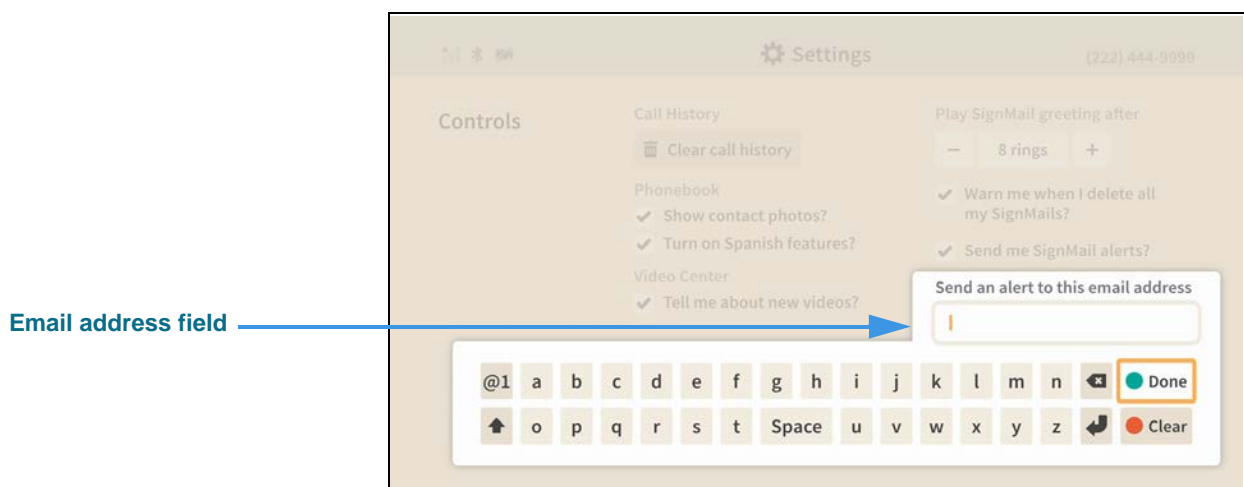


When the **Send me SignMail alerts?** checkbox contains a check, you can receive emails that tell you when have received new SignMail messages. You can enter one or two email addresses in the fields that have appeared below the checkbox. You must enter at least one email address for the feature to work.

Step 6. Move to the first **Send an alert to this email address** button as shown below.



Step 7. Select the **Edit** button to open the dialog shown below.



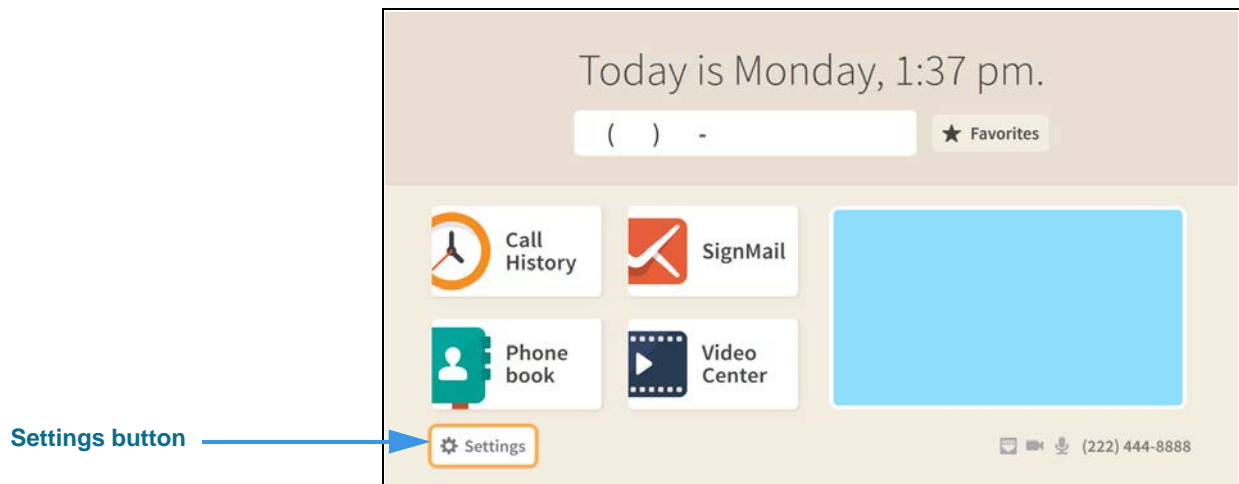
You can use the on-screen keyboard to enter the email address. When you are finished, select the **Done** button to return to the *Controls* screen. Repeat the process for the second email address field if you want to have emails sent to two addresses when you receive new SignMail messages.

When you are finished making changes, return to the *Home* screen by pressing the **Home** key on the remote control. Your changes will be saved.

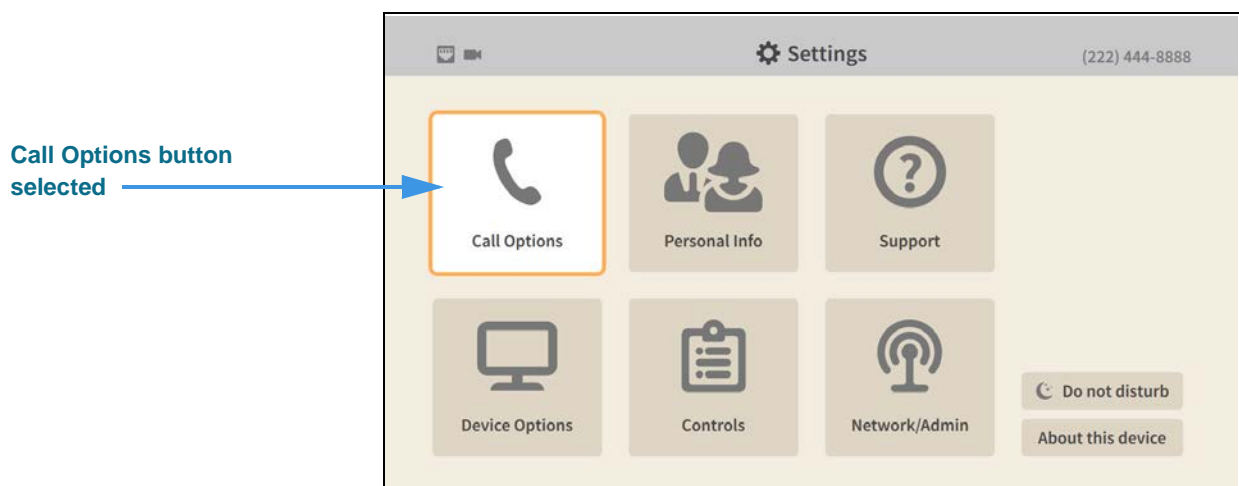
How do I set up the Saved Text feature?

You can use the Saved Text feature to create and save up to 10 short text strings that you can quickly call up during an active videophone call to send using the Share feature.

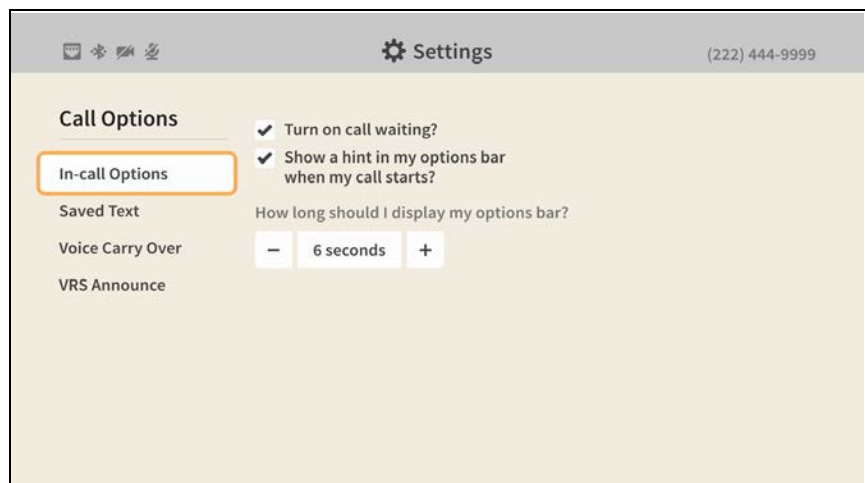
Step 1. Start at the Home screen as shown below.



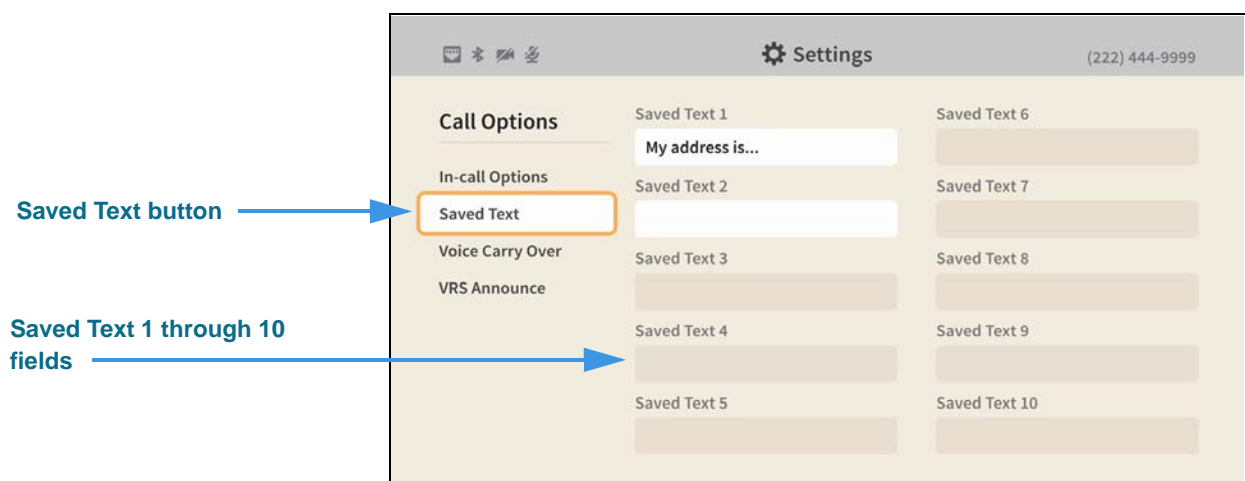
Step 2. Select the **Settings** button to open the screen shown below.



Step 3. Select the **Call Options** button to open the screen shown below.

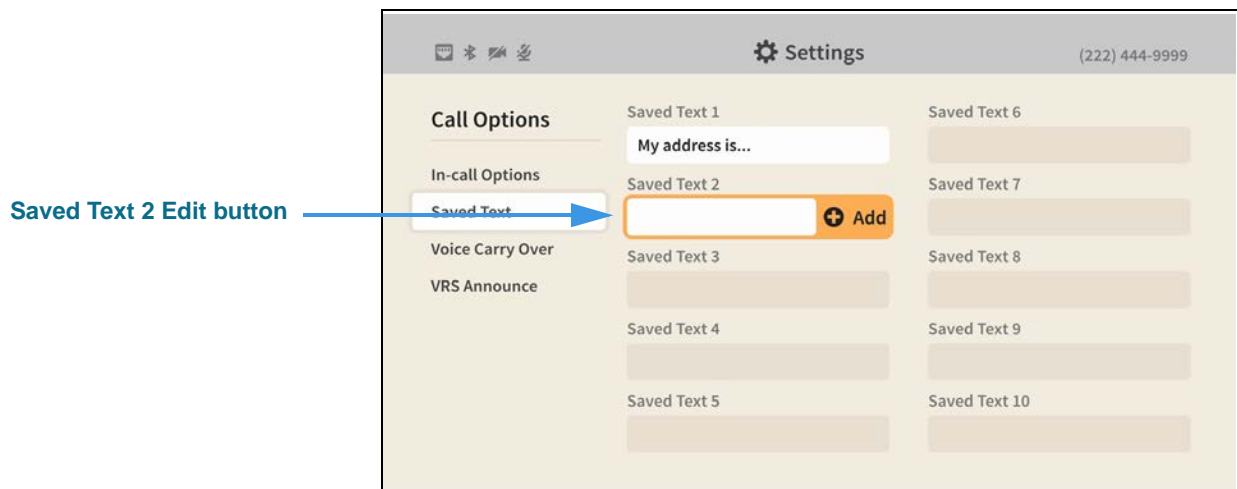


Step 4. Select the **Saved Text** button to open the screen shown below.

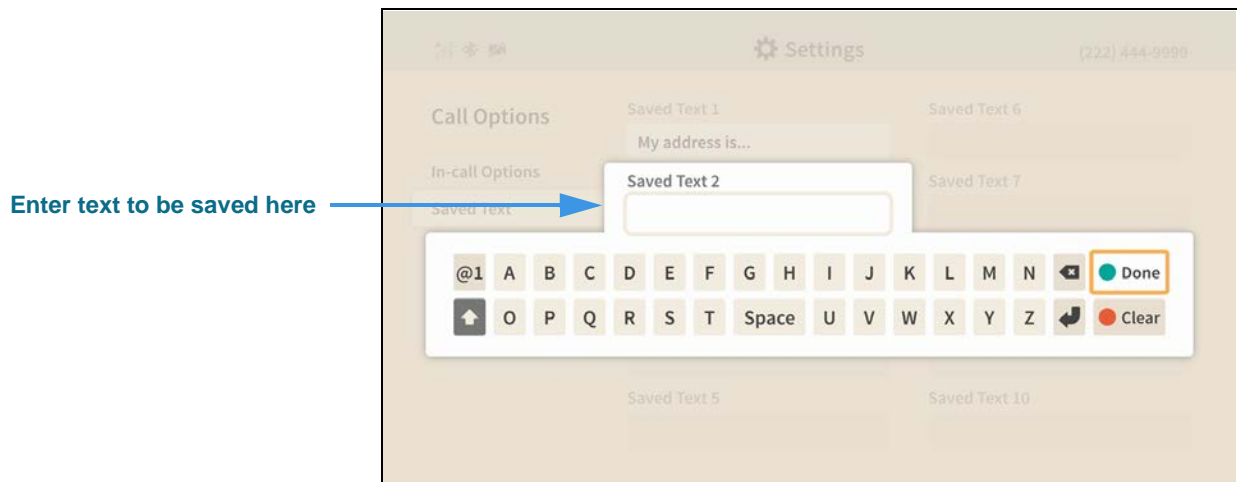


In this example, one Saved Text item (Saved Text 1) has already been created and saved.

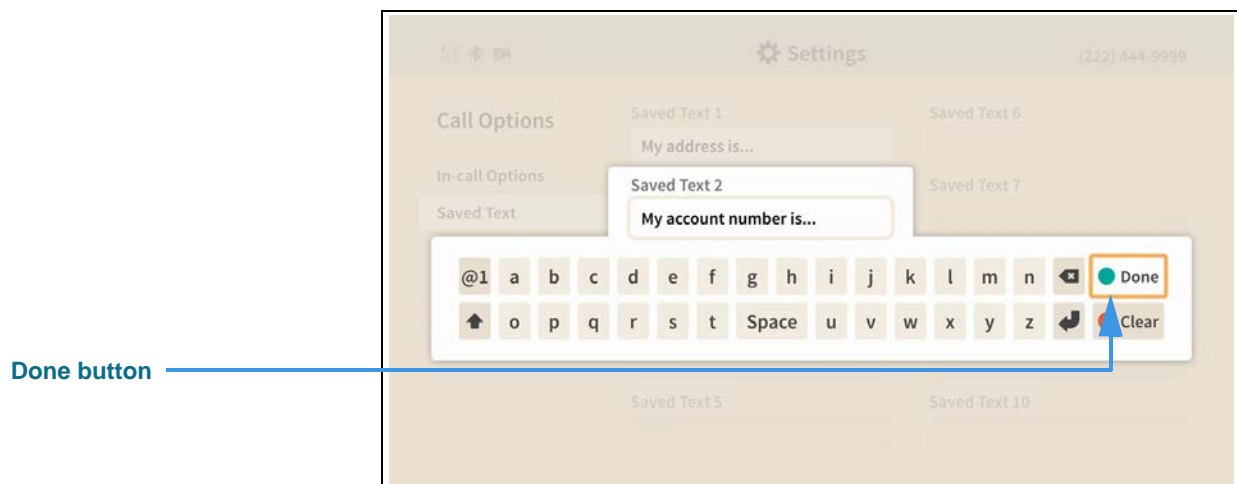
Step 5. Move to the **Saved Text 2** field to reveal the Edit button as shown below.



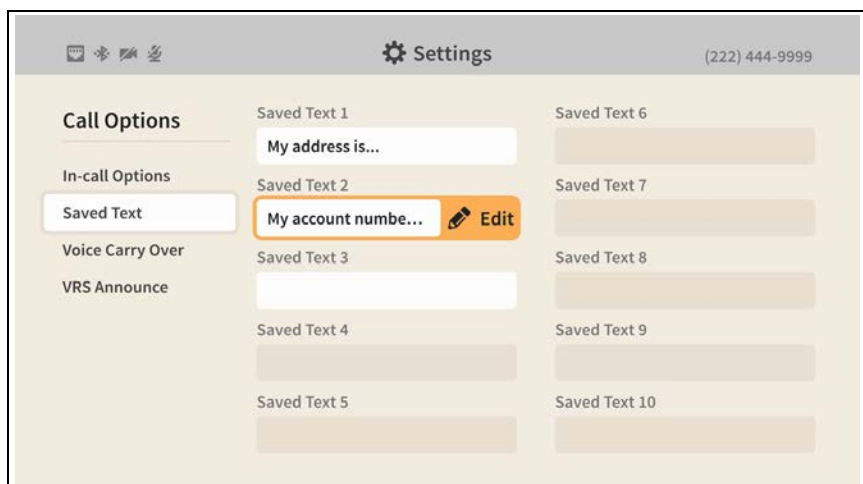
Step 6. Select the **Saved Text 2 Edit** button to open the dialog shown below.



Step 7. Use the on-screen keyboard to **enter the text** you want to save as shown below.



Step 8. When finished, select the **Done** button to return to the screen shown below.



Step 9. Repeat **Steps 5 through 7** if you want to create more Saved Text items.

Return to the *Home* screen by pressing the **Home** key on the remote control. Your selections will be saved.

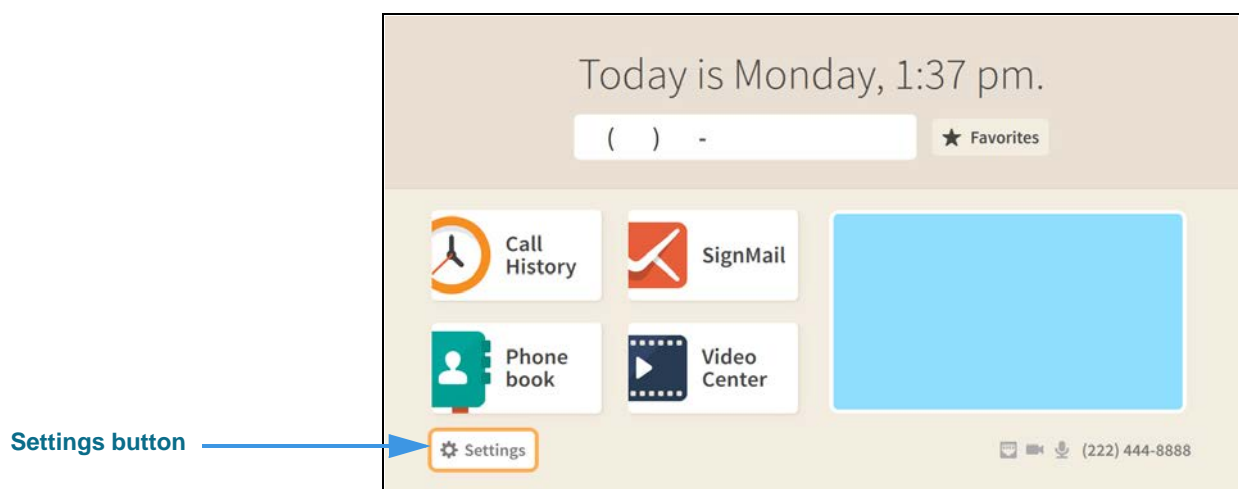
How do I turn the Camera Notifications feature on and off?

Step 1. Look at your ntouch VP2's remote camera unit as shown below.

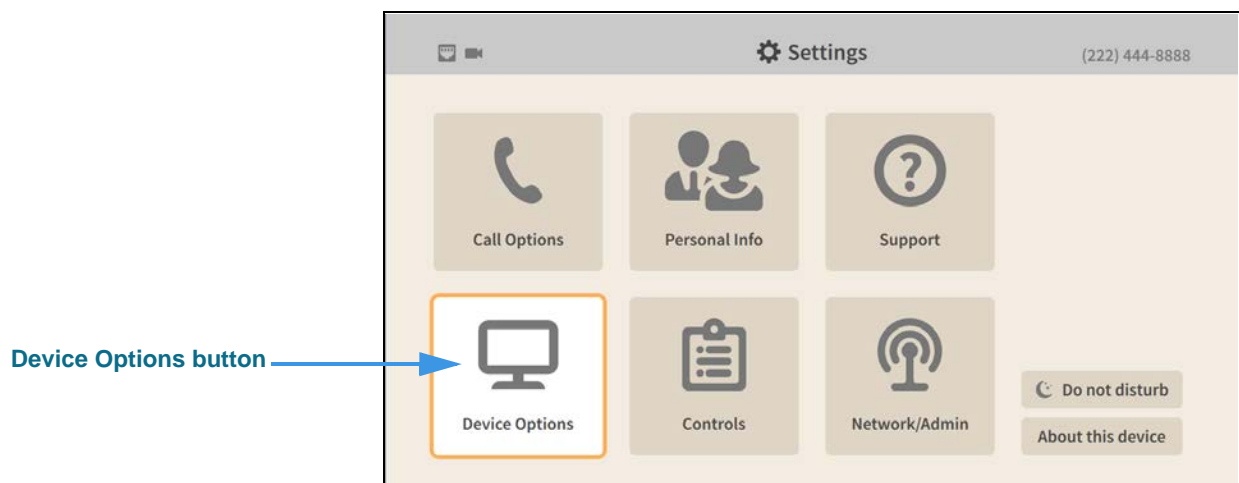


The “Camera Notifications” feature are the two icons printed on the front surface of the camera and two LEDs located next to the icons. If you like, you can turn off this feature off so that the LEDs will not light up when you receive new SignMails or missed calls.

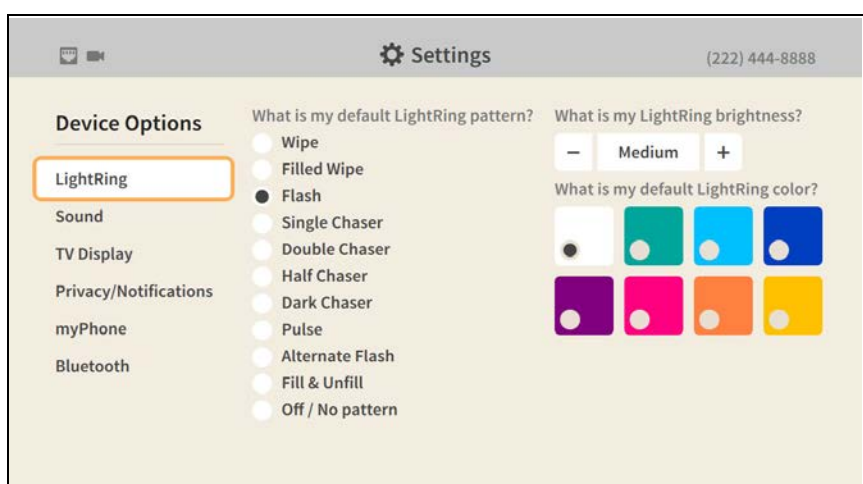
Step 2. Start at the Home screen as shown below.



Step 3. Select the Settings button to open the screen shown below.

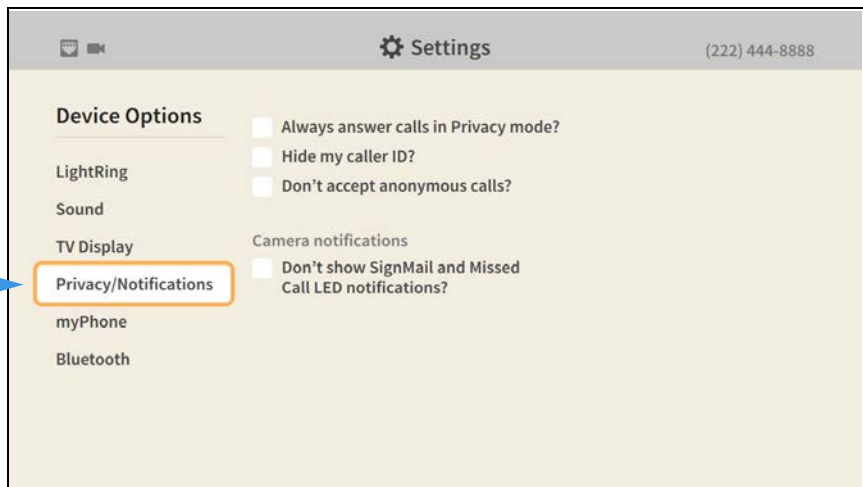


Step 4. Select the Device Options button to open the screen shown below.



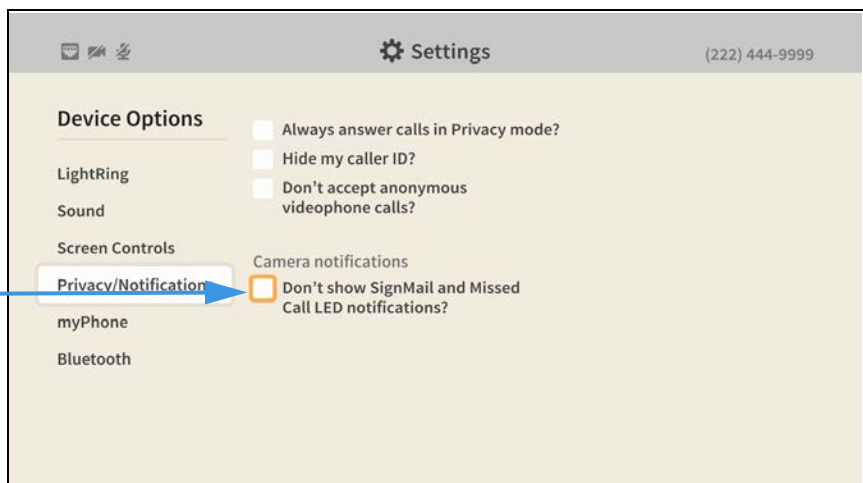
Step 5. Move to the **Privacy/Notifications** button as shown below.

**Privacy/Notifications
button** →



Step 6. Move to the **Don't show SignMail and Missed Call LED notifications?** checkbox as shown below.

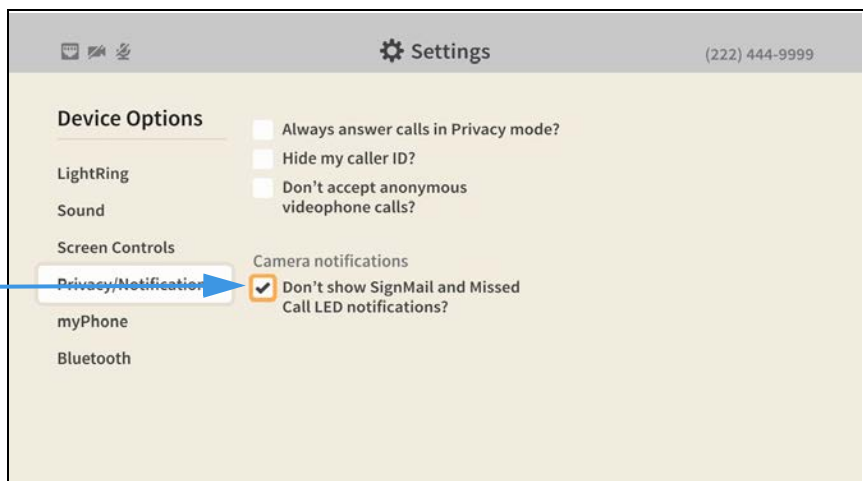
**Don't show SignMail and
Missed Call LED notifications?
checkbox without check** →



When the **Don't show SignMail and Missed Call LED notifications?** checkbox does *not* contain a check, the LED lights on the remote camera unit *will* light up to indicate you have received new SignMail and/or missed calls.

Step 7. Select the **Don't show SignMail and Missed Call LED notifications?** checkbox to add a check as shown below.

**Don't show SignMail and
Missed Call LED notifications?
checkbox with check** →



When the **Don't show SignMail and Missed Call LED notifications?** checkbox contains a check, the LED lights on the remote camera unit will *not* light up to indicate you have received new SignMail and/or missed calls.

Return to the *Home* screen by pressing the **Home** key on the remote control. Your selections will be saved.